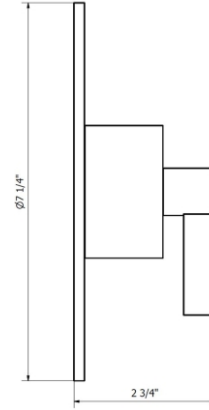


LOLLIPOP- FV115/J2L.0

Pressure balance valve, less diverter - trim only.

Conjunto decorativo para válvula de balanceo de presión 1/2".

FRANZ
VIEGENER



FEATURES

CARACTERÍSTICAS

- All brass construction.
Producto realizado íntegramente en latón.
- Safety stop device (100°F)
Dispositivo de detención segura (38°C).

COLOR / FINISHES

COLOR / ACABADOS



PC
Polished Chrome.



PN
Polished Nickel.



BN
Brushed Nickel.



BG
Brushed Gold.



PG
Polished Gold.



RG
Rose Gold.



BK
Black Chrome.



FB
Flat Black.



UPB
Unlacked
Polished Br

FLOW RATE

CAUDAL

ITEM DETAILS

DETALLE DE PRODUCTO

COMPLIANCE

CERTIFICACIONES

