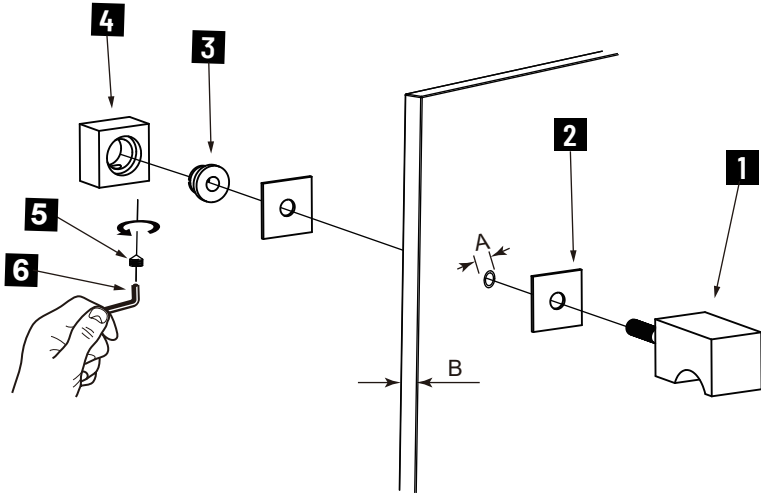


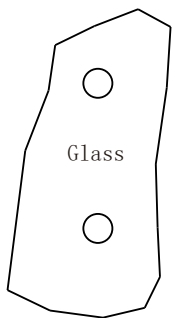
MUNICH COLLECTION

SINGLE SDH KNOB

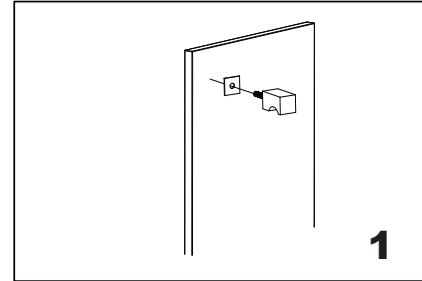
2887501



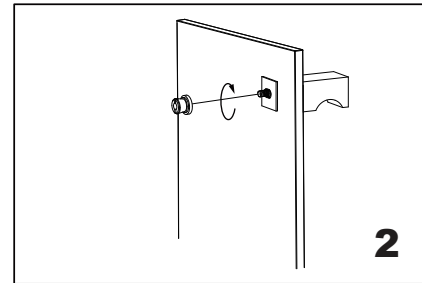
- 1. Knob x 1
- 2. Clear Gasket x 2
- 3. Fixing Bracket x 1
- 4. End Cap x 1
- 5. Set Screw M5 x 1
- 6. Allen Key 2.5mm x 1



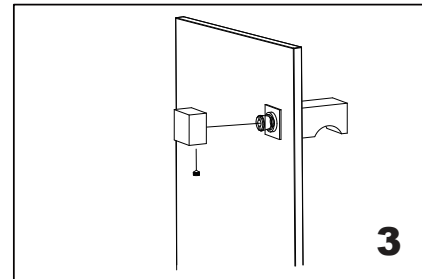
GLASS INFO		
A	1/2"(12mm)	Glass Hole Diameter
B	6-12mm	Glass Thickness



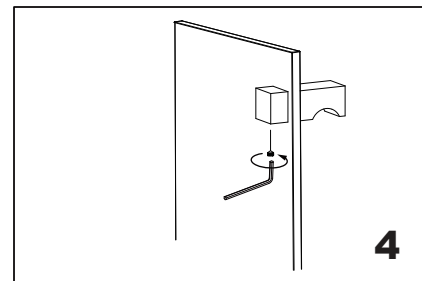
1 Install the knob (bolt) through the glass hole, make sure the rubber gaskets are between knob&glass.



2 Screw in the fixing bracket into the knob bolt.



3 Add the end cap on the fixing bracket,make sure the set screw hole in the bottom.



4 Fix the set screw on the end cap,tighten it to avoid loose from fixing brackets.